

904a

Mr. [unclear]

Yamanaka

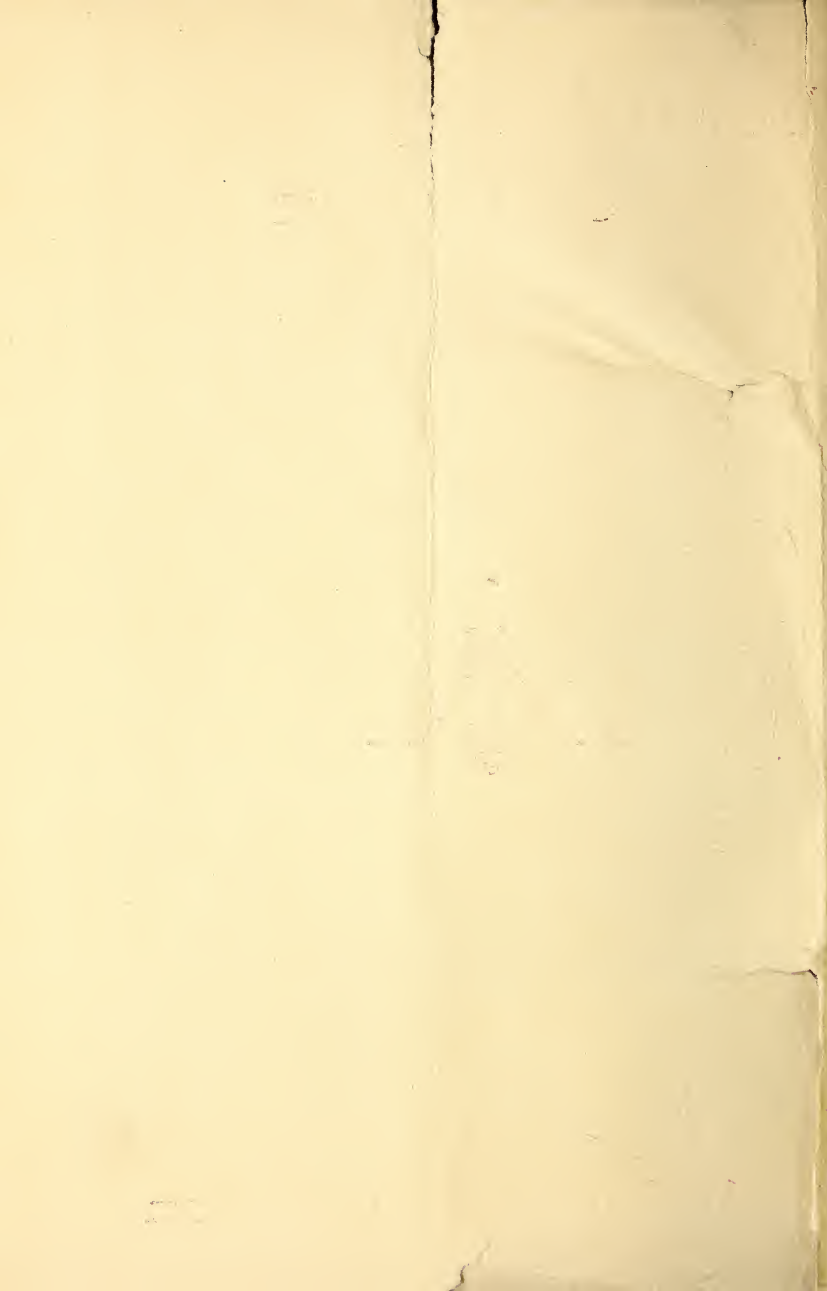
Auction
317

Collection



At Copley Hall, Boston

1700



CATALOGUE
OF
RARE AND SUPERB COLLECTION
OF
ANTIQUE CLOCKS,
Armors and Musical Instruments,
FROM
JAPAN AND CHINA,
TO BE SOLD AT PUBLIC AUCTION
On Thursday, Friday and Saturday Afternoons,
November 17, 18, 19, 1904.
AT 2.30 O'CLOCK, AT
COPLEY HALL, BOSTON.

Free Exhibition, beginning Monday, Nov. 14.

LEONARD & CO., - - - AUCTIONEERS.

017.37
.Y2 ✓
1904a

Conditions of Sale.

Bills payable in cash before delivery.

Bills must be sent for delivery of goods.

Goods to be removed at the expense and risk of the Purchaser immediately after the sale.

Goods not removed on the day of the sale remain at the risk of the Purchaser.

No claims allowed after the removal of goods.

Articles are exposed for examination and are sold without guaranty.

Articles are resold at the expense and risk of the Purchaser.

Deposits must be given when requested.

Our record of sales in all cases final.

Orders to buy executed without charge.

LEONARD & CO.,
Auctioneers.

NOTE.

Ancient Japanese clocks made their first appearance in Japan about 1574. They were originally introduced from China. There was an official specially appointed for the purpose of announcing the correct time by striking either a drum or a gong.

Day and night were divided into 48 parts, but later into 100. In Spring and Autumn, day was considered equally as long as night, namely, 50 parts each; in Summer, day 60 parts, night 40; in Winter, day 40 parts, night 60. Hours were known by names of the Zodiac, and compared with a modern clock they will be as follows :

IN MORNING.

1 o'clock	9½
2 "	8 Ushi.
3 "	8½
4 "	7 Tora.
5 "	7½
6 "	6 U.
7 "	6½
8 "	5 Tatsu.
9 "	5½
10 "	4 Mi.
11 "	4½
12 noon	9 Uma.

IN AFTERNOON.

1 o'clock	9½
2 "	8 Hitsuji.
3 "	8½
4 "	7 Saru.
5 "	7½
6 "	6 Tori.
7 "	6½
8 "	5 Inu.
9 "	5½
10 "	4 I.
11 "	4½
12 midnight	9 Ne.



3

426

228

CATALOGUE.

First Day's Sale.

Thursday, November 17, 1904, at 2.30.

1. DRUM.

Gold lacquer work ; rice in the stalk, on the centre wooden part ; from a Daimio's collection ; date, about 1750.

2. MINIATURE MUSICAL INSTRUMENTS (SIX IN THE SET).

All decorated with leaf tendrils in lacquer ; toys in a noble family ; date, about 1800.

3. JAMISEN.

Imported from Riu Kiu since Prince Shimazu's conquest ; snake skin on the body ; lacquered design of ho-o bird on the teak stick ; with an ivory stick ; date, about 1800. (See illustration.)

4. GEKKIN.

Chinese ; hexagonal shape ; dragon painted in lacquer ; has jade ornaments ; teak and paulownia imperialis thorough ; date, about 1750.

5. OLD DRUM.

Used in "No" dance ; lacquered leaf tendrils as decoration ; date, about 1750.

6. SAMISEN.

Teak wood ; Narihira on journey, in gold lacquer ; decorated horn stick ; date, about 1780.

7. TSUZUMI.

Lacquer work of book design ; date, about 1750.

8. SHRINE TAIKO.

Morning glory in lacquer ; for "No" dance ; with two sticks ; date, about 1750.

9. HICHIGEN KIN.

Chinese ; Zonsei lacquer ; decoration of ho-o and paulownia imperialis ; signed, artist "Sonko" ; date, about 1750.

Length, 46 inches.

10. OLD KOTO.

Thirteen stringed harp ; made of kiri wood ; chrysanthemum in lacquer, relieved with silver and mother of pearl ; date, about 1720.

11. TWO METAL ORNAMENTS.

From Chinese saddle ; open work of leaf tendrils and five-clawed dragon ; date, Chien Lung.

12. GILDED METALS (FOUR IN THE SET).

Taken from columns in a Chinese palace ; chased design of dragon amidst clouds ; date, Chien Lung.

13. GILDED METAL ORNAMENTS (SIX IN SET).

From a Chinese palace ; date, Chien Lung.

14. METAL ORNAMENTS (EIGHT IN NUMBER).

Formerly on the hinged doors of a Chinese palace.

15. BRONZE TEMPLE GONG.

Engraved on the bottom "Mune-Haru Nishimura Daibutsu, Kioto," name of the dedicator.

Diameter, $8\frac{1}{2}$ inches.

16. IRON CHEST.

A snake encircling a frog ; inside finished in red lacquer ; by Mune-Masa Miochin ; date, about 1600.

17. PEWTER CAKE BOWL.

Hexagonal, with cover ; edge lined with bronze ; date, about 1800.

18. IRON MILITARY FAN.

Inlaid decoration on the frames of dragons ascending and descending ; rising sun finished in gold and silver.

19. IRON NYOI.

From Chinese temple ; design, characters in silver ; inlaid work ; date, about 1750. (See illustration.) Length, 21 inches.

20. IRON FLOWER VASE.

Conventional design of a vine inlaid with silver ; date, about 1700. Height, 5 inches.

21. BRONZE PANEL.

Three masks of Ofuku in the centre ; chased design of precious articles ; date, about 1820.

22. CHINESE PEWTER PITCHER.

Melon shape, with cover ; handle of teak wood ; date, about 1650.

23. CHINESE PEWTER TRAY.

Engraved design of a dragon and waves ; edge of open work ; date, about 1600.

Dimensions, 9 x 10 inches.

24. CHINESE PEWTER BOWL.

Hexagonal form ; inlaid design of flowers of four seasons ; date, about 1700.

Height, 4 inches.

25. CHINESE PEWTER TRAY.

Orchid, pomegranate and mushroom inlaid.

Dimensions, 8 x 11½ inches.

26. CHINESE PEWTER TEA JAR.
Hexagonal shape ; marked "Gotobun Yeki-daigo" on the bottom ; date, about 1750.
Height, 12 inches.
27. JAPANESE PEWTER TEA JAR.
Mottled and rich texture ; rare ; date, about 1650.
Height, 7 inches.
28. CHINESE PEWTER PITCHER.
Minute engraving of leaf tendrils ; marked "Chushisho Gisho Zo" ; date, about 1800.
29. CHINESE PEWTER PITCHER.
Four-cornered shape ; unique in its appearance ; handles ; inlaid work on the cover.
30. JAPANESE PEWTER TEA JAR.
Simple and graceful form. Height, 9 inches.
31. SHRINE RAMMA.
Design, maple and long tail bird.
Height, 2 inches ; width, 9 inches.
32. SHRINE RAMMA.
Two kirins over cloud.
Height, 3 inches ; width, 12 inches.
33. TEMPLE RAMMA.
Carved design of lotus in water ; gilded frame.
Height, 10 inches ; width, 16 inches.

34. SHRINE RAMMA.
Carving, Chinese children and pine tree.
Height, 2 inches ; width, 13 inches.
35. SHRINE RAMMA.
Angels in cloud.
Height, 3 inches ; width, 20 inches.
36. SMALL CARVING.
Chinese hermit admiring flowers.
Height, 5 inches ; width, 22 inches.
37. SMALL RAMMA.
Carved design, ho-o bird and chrysanthemums.
Height, $6\frac{1}{2}$ inches ; width, 18 inches.
38. SHRINE RAMMA.
Teak wood ; Chinese sage worshipping God.
Height, $3\frac{1}{2}$ inches ; width, 13 inches.
39. SHRINE RAMMA.
Stag and plantain.
Height, 7 inches ; width, 11 inches.
40. SHRINE RAMMA.
Three angels playing music amidst clouds.
Height, $7\frac{1}{2}$ inches ; width, 39 inches.
41. MILITARY FAN.
Leaf tendrils in silver on one side and nine stars on the other.

42. IRON TOBACCO POUCH.

Hammered work of devil's mask; marked "Tamisuke"; netsuke of carved teak wood in form of Chinese lady; date, about 1800. (See illustration.)

43. BRONZE CANDLE STICK.

In form of lotus leaf, with a cicada and two grass-hoppers. Height, 22 inches.

44. MATE TO ABOVE.

45. BRONZE NYOI.

Gilded lotus flower; used in Zen sect.
Length, 20 inches.

46. CHINESE CLOISONNE PITCHER.

Various designs; date, about 1700.
Height, 5 inches.

47. IRON LANTERN.

Kasuga shape; a locust on its handle; date about 1650. Height, 18 inches.

48. BRASS VASE.

Chased design of Chinese hermit; figured handle; date, about 1700.

49. BRASS CANDLE STICK.

A stork standing on a turtle; date, about 1700.

50. BRASS KORO.

Hexagonal shape ; dog foo as a knob ; chased design of Chinese hermit. Height, 7 inches.

51. KOREAN UMBRELLA.

Made of bamboo ; used by officials in Korea ; date, about 1800.

52. COMPANION TO ABOVE.

53. BRONZE BUTTERFLY.

Articulated and finished in gold ; date, about 1750.

54. BATTLEDOOR.

Decorated with painting of festival day for girls and also with the crest of Tokugawa ; possibly from Tokugawa family ; date, about Genroku.

55. EMBROIDERY.

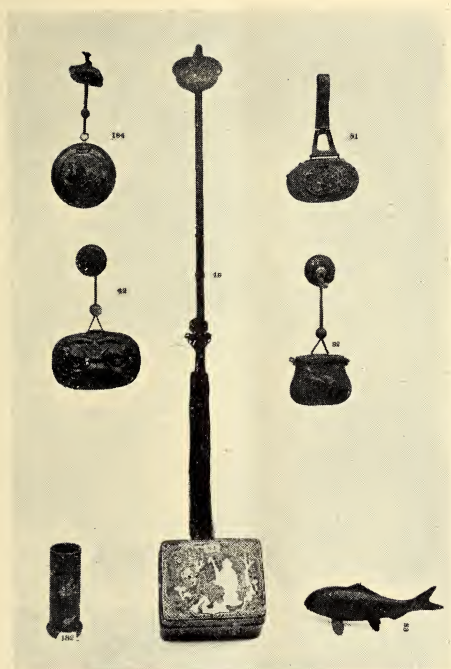
Triangle shape ; design of a tiger in bamboo bush ; has the crest star on the reverse side ; used on an ornamented car at festivals.

56. COMPANION TO ABOVE.

Design, turtle.

57. TWO ORNAMENTED METALS.

Open work of chrysanthemum ; used as nail cover in a palace ; date, about 1700.



184
42
182

19

81
82
83

58. IRON VASE.

Inlaid design of dragon and bamboo in gold and silver ; artist's name on the bottom ; date, about 1800. Height, 12 inches.

59. WOODEN PANEL.

Round form ; design of four pigeons ; date, about 1750.

60. GILDED METAL BOX.

Lined with brocade ; has the crest of Koyasan ; for scrolls ; date, about 1760.

61. OLD SPEAR.

Handle of kashi wood ; spear head cover of silver. Length, 110 inches.

62. SWORD.

Handle decorated with mother of pearl ; the blade has the mark "Sadatsugu Shimosaka of Echizen." Length, 102 inches.

63. OLD SPEAR.

Handle of kashi wood. Length, 116 inches.

64. OLD SPEAR.

Ornated with chased silver. Length, 123 inches.

65. OLD KUMADE.

Handle finished in mother of pearl. Length, 72 inches.

66. OLD NAGINATA.

Mother of pearl decorates the handle.

Length, 98 inches.

67. IRON HAT.

For ancient general; repousse work of snake;
date, about 1800. Diameter, 18 inches.

68. IRON HELMET.

Lacquer design of dog-foo and conventional
vine in gold; front ornament, two children in
cloud; date, about 1700.

69. IRON VISOR.

Date, about 1750.

70. IRON HELMET.

Round form; lacquered decoration of ho-o
bird; plume ornament; date, about 1750.

71. IRON HELMET.

Called "Mongolian shape"; has the crest;
date, about 1700.

72. IRON HAT.

For military officials; repousse of "Fudo";
date, about 1750.

73. IRON VISOR.

Benidame lacquer over the iron; date, about
1750.

74. KUSARI KAMA OR SWORD BREAKER.

Costly lacquer in peony design; date, about
1700. Length, $15\frac{1}{2}$ inches.

75. IRON VISOR.

By Shigekuni Miochin; date, about 1650.

76. SMALL FIRE-ARM.

Inlaid work of dragon in gold and silver;
ornated with chased silver; the crest of Toku-
gawa; date, about 1750.

77. SMALL FIRE-ARM.

Inlaid design of dragon in silver; date, about
1700.

78. IRON VISOR.

Design of rabbit over waves; date, about 1700.

79. METAL ORNAMENT.

Design of bronze helmet placed over iron.

80. SADDLE.

Inlaid design of dragon in gold and silver on
iron; date, about 1700.

81. IRON TOBACCO BOX.

Rabbit and autumnal flowers inlaid on iron;
by Yasu Mune; date, about 1750. (See illustra-
tion.)

82. IRON TOBACCO BOX.

Repousse work of two stags and Susuki grass ;
ornamented with farmer's hut in iron ; Ojime of
iron ; date, about 1800. (See illustration.)

83. IRON CARP FISH.

By Sukenori Goto ; rare. (See illustration.)
Length, 7½ inches.

84. CHINESE IRON BOX.

Inlaid design of man, stag and Shippo ;
marked " Ho toku do sei " ; Chieng Lung period.

85. BRONZE HIBACHI.

Peony and dog-foo in repousse ; perforated
handle ; cover of old cloisonne ; date, about
1600. Height, 6 inches.

86. HIROSHIMA BRONZE BRAZIER.

Hammered design of dog-foo ; tripod sup-
porter ; date, about 1850.

87. BRONZE FLOWER VASE.

Chrysanthemums and autumnal flowers as de-
sign ; gilded, with two handles ; date, about
1600. Height, 16 inches.

88. IRON LANTERN.

Hexagonal Kasuga shape ; design, leaf ten-
drils ; date, about 1600. Height, 22 inches.

89. IRON VASE.

Design, silver inlaid ; dragon handles ; date,
about 1650. Height, $7\frac{1}{2}$ inches.

90. IRON PITCHER.

Design, pine ; knob of pine ; cone shape ;
bronze handle ; by Yasubei. Height, 10 in.

91. SHRINE RAMMA.

Chinese carving of hermit traveling ; rich pig-
ment ; carved on both sides.

Height, 5 inches ; width, 15 inches.

92. CARVED PANEL.

Subject, one of stories of twenty-four obedient
sons. Height, $6\frac{1}{2}$ inches ; width, $14\frac{1}{2}$ inches.

93. TWO RAMMAS.

Carved design ; Chinese crossing a bridge ;
costly pigment.

Height, $5\frac{1}{2}$ inches ; width, 11 inches.

94. SMALL RAMMA.

Chrysanthemum and water ; finished in gold.

Height, 4 inches ; width, 23 inches.

95. SHRINE RAMMA.

Design, peony in colors ; frame of gold lacquer.

Height, $6\frac{1}{2}$ inches ; width, 37 inches.

96. SMALL CARVING.

Pierced work of ho-o birds and conventional vine ; in pigments.

Height, $5\frac{1}{2}$ inches ; width, 40 inches.

97. HANGING WOODEN PANEL.

Carved design ; falcon on a perch ; raised pigment ; old cedar.

Height, 39 inches ; width, 15 inches.

98. MINIATURE PILLAR.

Model for the pillar at Nikko temple ; costly pigment ; Tokugawa crest.

Height, 48 inches ; width, 8 inches.

99. RAMMA.

Chinese carving of fruit and birds ; from a Chinese temple ; date, Chien Lung.

Height, 20 inches ; width, 40 inches.

100. WOOD CARVING.

Design, ho-o bird and cloud ; in pigments ; date, about 1650.

Height, 14 inches ; width, 37 inches.

101. CONCH SHELL.

Used by a Daimio at a military drill ; date, about 1700.

102. GOURD BRAZIER.

Natural gourd decorated with painting of military fan and chrysanthemum in lacquer.

103. LACQUER BOX.

Two compartments : Kiri crest in Zonsei lacquer and mother of pearl ; date, about 1750.

Dimensions, 11 x 13 x 10 inches.

104. CHINESE CANES.

Three in number ; carving of dragon and pigeon ; for priest's use : Kang-hi period.

105. HANGING METAL LANTERN.

Hexagonal shape ; Kiri crest and leaf tendrils ; date, about 1750. Height, 12 inches.

106. WOOD STAND.

Design carved peony in pigment ; for hand bells in a family shrine ; date, about 1850.

107. CLOISONNE BOWL.

Lotus tendrils.

Height, 5 inches ; diameter, 10 inches.

108. BRONZE PITCHER.

Chased work, chrysanthemum and autumnal flowers ; with cover. Height, 10½ inches.

109. SET OF STIRRUPS.

Outside inlaid design, turtle ; inside, mother of pearl ; date, about 1700.

110. COLLECTION IRON LOCKS.

Seven in number ; 16th century.

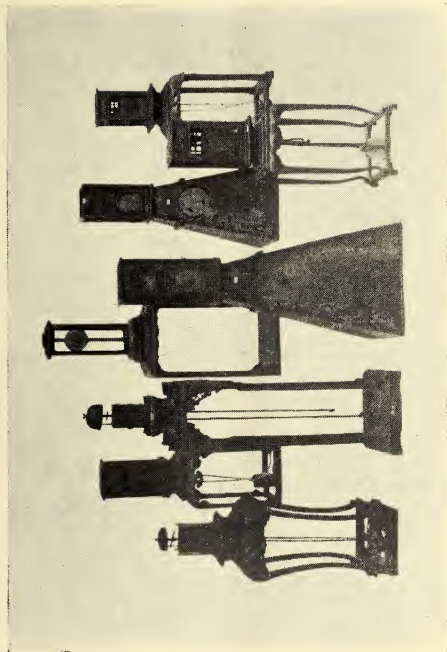
111. COLLECTION IRON LOCKS.
Seven pieces ; 16th century.
112. SET OF SIX ORNAMENTAL METALS.
113. OLD JAPANESE CLOCK.
Case of teak wood ; brass movement ; carved peony ; ho-o bird and leaf tendrils in lacquer ; date, about 1800. Height, 16 inches.
114. OLD JAPANESE CLOCK.
Raised lacquer design of chrysanthemum ; iron movement ; brass case ; date, about 1780. Height, 21 inches.
115. PAIR SLEEVES.
Repousse of dragon fly, grasshopper and butterfly ; sleeves of the haubeck ; date, about 1650.
116. OLD JAPANESE CLOCK.
Of mulberry wood ; brass movement ; peony engraved ; stand decorated with lacquer and mother of pearl ; date, about 1800. Height, 24 inches.
117. IRON VISOR.
Inside, red lacquer ; date, about 1700.
118. OLD JAPANESE CLOCK.
Brass movement ; engraved design of peony ; stand, Mitsuda lacquer of lotus ; date, about 1750.

120

273

277

421



122

335

492

478

119. IRON CORSELET.

Dragon in medallion, inlaid in silver; date, about 1750.

120. OLD JAPANESE CLOCK.

Brass movement; mulberry wood stand in lacquer; design, ho-o and leaf tendrils; date, about 1750. (See illustration.)

121. IRON GREAVES.

Silver inlaid; design of dragon; date, about 1700.

122. OLD JAPANESE CLOCK.

Brass movement; stand decorated with the design of dragon; dog-foo and ho-o in lacquer; date, about 1750. (See illustration.)

Height, 36 inches.

123. CUIRASS.

Repousse work of dog-foo; by Yoshitsugu Miochin; date, about 1750.

124. IRON VISOR.

Benidame lacquer on iron; date, about 1750.

125. SMALL SCREEN DOORS (FOUR FOLDS).

Carving of chrysanthemum and peony tendrils; brocade lining. Height, 4½ inches.

126. LACQUERED PANEL.

Reed and locust in lacquer and mother of pearl; date, about 1800.

Height, 45 inches; width, 10 inches.

127. PAINTED WOOD DOOR.

Of cedar; design, iris and swallow; frame in silver lacquer; cloisonne handle.

Height, 67 inches; width, $17\frac{1}{2}$ inches.

128. SMALL SCREEN DOOR (FOUR FOLDS).

Carved design of grapes, water, carp fish, etc.; lower part ornated with carved crests.

Height, 49 inches; width, $9\frac{1}{2}$ inches.

129. HANGING PANEL.

Basho leaves and ducks in Mitsuda lacquer.

Height, 52 inches; width, 23 inches.

130. SCREEN DOORS (FOUR FOLDS).

Carved work, bamboo and flowers in seasons; Fukura sparrows on the lower part.

Height, 70 inches; width, $14\frac{1}{2}$ inches.

131. TWO-FOLD SCREEN.

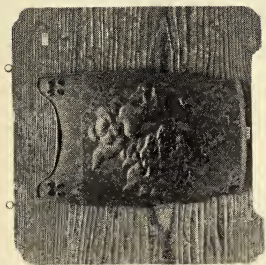
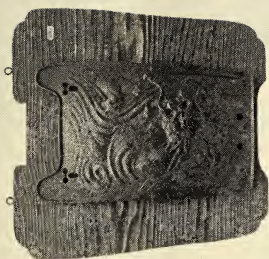
Lily flowers painted on gold; Kano school; date, about 1600.

Height, 63 inches.

132. TWO-FOLD SCREEN.

Painted design, bamboo and peony; Kano school; date, about 1650.

Height, $66\frac{1}{2}$ inches.



123

290

133. FOUR-PANELED SCREEN.

Peacock and rocks painted on silver background ; date, about 1750. Height, 67 inches.

134. MATE TO ABOVE.

135. SMALL SCREEN (SIX FOLDS).

Design, Japanese festivals from January to June ; Ukiyo school ; date, about 1750.

Height, 42 inches.

136. MATE TO ABOVE.

Japanese festivals from June to December.

137. SIX-FOLD SCREEN.

Bamboo and plum tree in snow and mandarin duck in water ; painted by Yeino Kano ; signed ; date, about 1750. Height, 69 inches.

138. LACQUER BOX.

Peony tendrils in Zonsei lacquer ; strengthened with ornamented metals ; with a tray ; date, about 1800. Dimensions, 16 x 24 x 14 in.

139. LACQUER BOX.

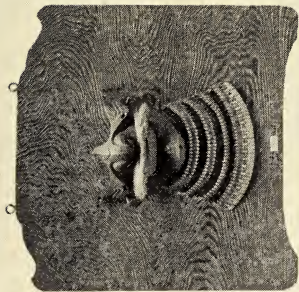
Crest design in lacquer ; date, about 1800.

Dimensions, 16 x 24 x 14 inches.

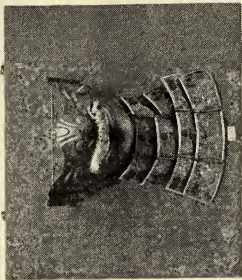
140. PAIR BRASS RINTO OR LAMPS.

Engraved design of wistaria ; from Hongwanji temple. Height, 46 inches.

141. DRUM.
 Painted design of peony and dog-foo ; similar subject in carving ; formerly in Buddhistic temple. Height, 30 inches.
142. PAIR BRASS RINTO.
 Design, peony. Height, 51 inches.
143. COMPLETE EQUIPMENT FOR FENCING.
 Bamboo corselet with carved decoration of dragon ; two mittens, one tach ; bamboo sword ; head piece.
144. MATE TO ABOVE.
145. TEMPLE GONG.
 Gilded wood stand ; date, about 1650.
146. PAIR EPAULIERES.
 Made of leather, finished in gold ; plum design ; date, about 1700.
147. PAIR IRON GREAVES.
 Inlaid bamboo ; by Yoshihisa Miochin.
148. PAIR IRON EPAULIERES.
 Repousse work of dragon and cloud ; marked "Mune Yasu Mochin" ; date, about 1500.
149. TACES.
 Repousse of various insects in iron ; date about 1750.



202



150

150. IRON VISOR.

Silver inlaid, with neck protector; by Yoshi Nori Mochin. (See illustration.)

151. WOODEN FIGURE EMMA.

Of Hinoki wood; decorated with pigment.

Height, 13½ inches.

152. OLD BRONZE CANDLESTICK.

Octopus shape; date, about 1780.

Height, 24 inches.

153. MATE TO ABOVE.

154. OLD JAPANESE PEWTER VASE.

Engraved design; flying storks in cloud; carp fish handles; for Yenshu style; date, about 1800.

155. BRONZE HIBACHI.

Four-cornered shape; design, bamboo and zodiac; date, about 1700.

156. IRON WRITING CASE.

Repousse dog-foo; mark, "To order, made by Munesuke Miochin Gotetsusai."

Note. The artist is also called Kino Munesuke Masuda Idzuno no Kami.

157. LACQUER TABLET.

Chin Kin carving; landscape on top; peony tendrils on sides; lower pedestals has carved design of landscape; by lacquer artist Sosuke, Kaga.

Diameter, 19 x 19 x 24 inches.

Note. The carving Chin Kin is done with gold leaf placed on the work and then by rubbing it down.

158. OLD KASUGA LANTERN.

Hexagonal shape ; from Kasuga temple ; date, about 1700. Height, 13 inches.

159. WOODEN CANDLE STICK.

Lower stand of chrysanthemum shape ; fuyo flower carved on shaft ; gilded bronze shade with lotus design ; date, about 1750. Height, 39 inches.

160. MATE TO ABOVE.

161. WOODEN DOOR.

Of Satsuma cedar ; pink and white fuyo flowers in Mitsuda lacquer ; gilded frame ; date, about 1750. Height, 67½ in. ; width, 28 in.

162. MATE TO ABOVE.

163. OLD JAPANESE CLOCK.

Brass movement ; fuyo design ; date, about 1830. Height, 30 inches.

164. IRON GONG.

Repousse of Ni-o ; gilded black lacquer frame ; rare. Diameter, 30 inches.

165. GILDED METAL ORNAMENT.

In form of ho-o bird ; the crest of the bird finished in rich pigment ; from Yawata temple, where it stood on the top of the sacred car ; red lacquer stand ; mark, "Denkuro Suzuki East Sei do in Taka tsuji, Kioto," foundon the back of the ho-o.

166. BRONZE GONG.

Carved crest on the stand.

Diameter of gong, $15\frac{1}{2}$ in. ; height, 30 in.

167. SMALL SCREEN DOORS.

Four folds ; chrysanthemum, orchid, plum and bamboo carved in centre ; pierced crests on the upper part. Height, 42 inches.

168. TRAVELING BOX.

Peony tendrils in Zonsei lacquer ; the cres tof water wheel ; ornated metal fastenings ; the crest belongs to Doi Oino Kami.

Diameter, 16 x 24 x $14\frac{1}{2}$ inches.

169. MATE TO ABOVE.

170. SCREEN DOORS.

Four folds ; carved design fuyo flowers and small birds ; peony vines in centre and lotus tendrils on the lower part. Height, 71 inches.

Second Day's Sale.

Friday, November 18, 1904, at 2.30

171. BRONZE BOWL.

Inlaid design; tripod supporter; engraved decoration of cloud inside; date, about 1700.

Diameter, 9 inches; height, 2 inches.

172. CHINESE PEWTER TRAY.

Brass inlaid decoration of Chinese and pine tree; date, about 1750.

Dimensions, $8\frac{1}{2}$ x 11 inches.

173. BRONZE ORNAMENT.

Articulated work of a dragon fly; date, about 1800.

174. CHINESE PEWTER PITCHER.

Brass inlaid design of ho-o bird; marked "Shu Go Ko Go Ji Zo"; date, about 1750.

Height, 11 inches.

175. CHINESE PEWTER TEA CADDY.

Mottled surface; rich texture.

Height, 10 inches.

176. BRONZE WATER JAR.

Octagonal shape; conventional vine and birds as design; marked "Ta Ming Wan-li nen chih"; inside finish in gold leaf. Height, 8 inches.

177. BRONZE TRAY.

Repousse of dragon in medallion ; date, about
1650. Diameter, $12\frac{1}{2}$ inches.

178. CHINESE PEWTER BOWL.

Six-sided and two compartments ; inside lac-
quered in red ; date, about 1700.

Height, $5\frac{1}{2}$ inches.

179. BRONZE PITCHER.

Hammered work ; handles ; date, about 1700.

Height, 12 inches.

180. PEWTER TEA JAR.

Four-cornered shape ; brass inlaid work of
fruits ; Chien Lung period. Height, 6 inches.

181. METAL TEA BOWL.

Conventional vine engraved outside ; gilded
inside ; used in Buddhistic temple ; date, about
1700. Diameter, 5 inches.

182. IRON CYLINDRICAL VASE.

For brushes ; paulownia imperialis and two
ho-o birds inlaid in gold and silver ; date, about
1800. (See illustration.) Height, $14\frac{1}{2}$ inches.

183. METAL WINE BOTTLE.

Design, flower cart and children at play ;
minute brocade pattern on the cover ; the knob
is of pomegranate shape ; date, about 1850.

Height, $6\frac{1}{2}$ inches.

184. IRON TOBACCO BOX.

Inlaid decoration, dragon in medallion in gold and silver; unique netsuke of natural wood; carved Ojime of a seed; date, about 1800. (See illustration.)

185. IRON NYOI.

For Buddhists; Chinese work; inlaid throughout; date, about 1600.

186. IRON CANDLE STICK.

In form of lotus with a snail; by Mune Masa Miochin. (See illustration.)

187. IRON MILITARY FAN.

Dragons ascending and descending, inlaid; rising sun; marked "Made by Riu Shin Mume Tada."

188. BRONZE PANEL.

Gilded mask of Ofuku in centre; date, about 1820.

189. IRON JUTTEI.

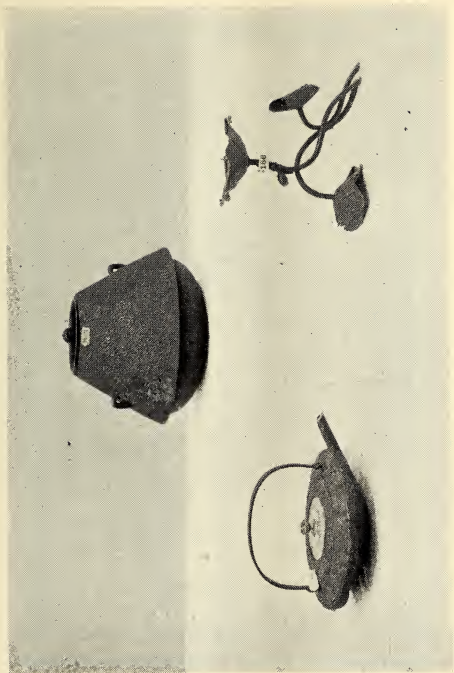
Handle ornated with silver; used by policeman in time of Tokugawa; date, about 1750.

Length, $16\frac{1}{2}$ inches.

190. BRONZE WATER PITCHER.

Inlaid work; date, about 1750.

Height, 11 inches.



398

393

186

191. WOOD PANEL.

Of keyaki wood ; pottery badger inlaid ; decorated with ivory, lacquer and mother of pearl ; by Ko-un ; date, about 1850.

192. SHRINE RAMMA.

Peony and leaf tendrils carved and decorated in pigment. Height, 4 in. ; width, 27 in.

193. WOODEN MASK OF HORSE.

Employed at dancing in temples in time of Kamakura.

194. PANEL.

Carved figure on one side and poetry by Hito-Marō on the other ; 16th century.

195. WOOD CARVING.

Dog-foo ; from a helmet.

196. ROUND WOODEN PANEL.

Bamboo leaf crest ; gilded ; from a temple.

Diameter, 13½ inches.

197. GONG.

Made of keyaki wood ; carving, chrysanthemum and conventional vine ; for announcing ceremonial tea ; date, about 1600.

198. LARGE CARVED WOOD TRAY.

Round ; of cherry ; design, vegetables and Chinese lily in a basket and two nightingales ; finished in Mitsuda lacquer. Diameter, 27 in.

199. WOODEN INK POT.

For carpenter's use ; carving in style of Kamakura.

200. PAIR OF WOOD PANELS.

Design, a high priest over cloud ; found on either side of the shrine in a temple.

Dimensions, $6\frac{1}{2}$ x $15\frac{1}{2}$ inches.

201. IRON MILITARY HAT.

Repousse Chinese characters ; the reverse side has the mark "Miochin" ; date, about 1750.

202. IRON VISOR.

With neck protector ; mounted on Satsuma cedar. (See illustration.)

203. IRON GREAVES.

Inlaid decoration of wistaria ; date, about 1700. (See illustration.)

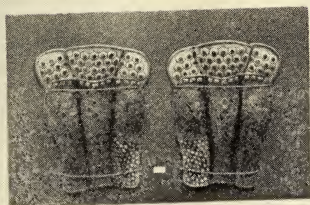
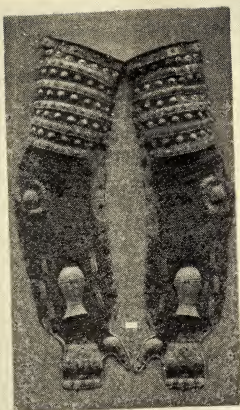
204. PAIR OF IRON SLEEVES OF THE HAUBERK.

Crest design pierced ; by Sada Yuki Mochin ; date, about 1700. (See illustration.)

205. IRON MILITARY HAT.

Hammered decoration of Nitta Shiro hunting a wild boar ; marked "Miochin" ; date, about 1750.

204



203

206. IRON DOOR.

From Lord Kaga, who carried his safe to Yedo, from which the door is detached; date, about 1650. Height, 14 inches; width, 15½ inches.

207. COLLECTION IRON LOCKS (FIVE IN SET).

Date, about 1650.

208. IRON HELMET.

Zunari style; Benidame lacquer; ornamented with stag's horns; date, about 1650.

209. IRON VISOR.

By Katsu Masa; date, about 1700.

210. IRON HELMET.

Front ornament, "Kuwagata"; chased design of chrysanthemum; gilded; by Yoshi Yasu; date, about 1650.

211. COLLECTION OF METAL HANDLES (NINETEEN IN ALL).

212. COLLECTION OF KNIFE HANDLES (TEN IN NUMBER).

Various designs.

213. JUTTEI.

Of iron, with inlaid dragon; marked "Hinga no Kami"; the case decorated with the crest Aoi and with pine and leaf tendrils in lacquer.

214. OLD CLOISONNE BOWL.
Design, leaf tendrils. Diameter, $8\frac{1}{2}$ inches.
215. OLD CLOISONNE KORO.
In form of peacock ; with cover.
Height, $9\frac{1}{2}$ inches ; length, 13 inches.
216. BRONZE WATER JAR.
Engraved decoration of pine, plum, bamboo,
dragon and tiger ; with cover.
Height, 7 inches.
217. BRONZE KETTLE.
For Cha-no-Yu ; hammered work of brocade
pattern. Height, $6\frac{1}{2}$ inches.
218. BRONZE CLOISONNE VASE.
Four-cornered shape ; ho-o and conventional
vine. Height, 8 inches.
219. BRONZE CLOISONNE KORO.
Tripod supporters ; gilded.
Height, $7\frac{1}{2}$ inches.
220. SMALL KOTO.
Of paullownia imperialis and black persim-
mon ; lacquer work of leaf tendrils.
Length, 23 inches.
221. MILITARY DRUM.
Painted on both sides, dragon and ho-o ; frame
of black lacquer ; date, about 1600.



231

424

224, 225, 222, 223, 224

222. FLUTE SHO.

Nashiji lacquer of dragon ; silver ornament.
(See illustration.)

223. FLUTE "YOKO BUYE."

For "No" music ; of bamboo taimin ; date,
about 1700. (See illustration.)

224. FOUR FLUTES "KUSA BUYE."

Various costly lacquer finish ; with brocade
covers ; date, about 1830. (See illustration.)

225. FLUTE "YOKO BUYE."

Lacquer decoration of kiri karakusa ; brocade
bag ; date, about 1800. (See illustration.)

226. JAMISEN.

Of snake skin ; lacquer finish on teak shaft ;
date, about 1750.

227. CONCH SHELL.

For military use in ancient Japan ; date, about
1700.

228. HICHIGEN KIN.

Floral decoration in lacquer ; date, about
1700. (See illustration.) Length, 49 inches.

229. BIWA.

Musical instrument; from a certain noble family; mulberry wood; decorated with dragon and ho-o in lacquer; Zonsei lacquer on reverse side; with stand; date, about 1750.

230. KOTO.

Thirteen stringed harp; of kiri wood; cherry design in lacquer and mother of pearl; by Tasuke; date, about 1770.

231. SHINTO TEMPLE DRUM.

Chrysanthemum decoration in rich pigment; stand of mulberry wood; date, about 1800. (See illustration.)

232. MILITARY DRUM.

Crest Kiri as design; marked "Ten Ga Ichi Spring 2nd month 3rd year of Bun Roku."

Height, 43 inches.

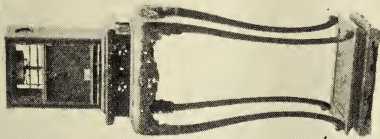
233. JAPANESE CLOCK.

Brass movement; design, peony tendrils; teak stand, with decoration in lacquer and mother of pearl; date, about 1800. (See illustration.)

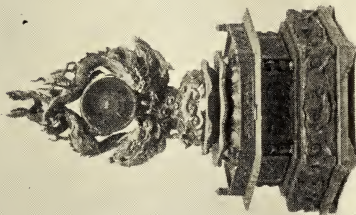
Height, 18 inches.

234. SMALL FOUR-FOLD SCREEN.

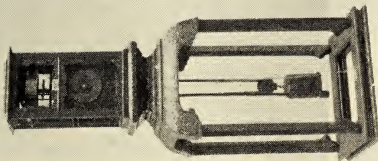
Carved design in centre, birds in seasons; peony in the lower part. Height, 49½ inches.



337



308



427

235. JAPANESE CLOCK.

Brass movement ; encased with black persimmon ; stand of mulberry wood ; ornated with silver ; date, about 1750. (See illustration.)

Height, $31\frac{1}{2}$ inches.

236. IRON HAT.

Outside ornamented and gilded ; date, about 1700.

237. OLD JAPANESE CLOCK.

Brass movement ; encased in teak ; lacquer and mother of pearl decoration ; stand.

Height, 26 inches.

238. METAL COLLECTION (SEVEN PIECES IN ALL.)

Iron, bronze and silver works.

239. JAPANESE CLOCK.

Brass movement ; engraved design of flower basket ; teak case having lacquer work of peony ; date, about 1780.

240. OLD BRONZE CANDLE STICK.

In form of boat, with two children.

Height, 24 inches.

241. MATE TO ABOVE.

242. IRON VISOR.

By Yoshi Hisa ; date, about 1730.

243. IRON KASUGA LANTERN.

Hexagonal shape ; perforated decoration of pine and bamboo ; date, about 1650.

Height, 14 inches.

244. JAPANESE PEWTER TEA JAR.

Mottled ; date, about 1700.

245. GILDED METAL HIBACHI.

Floral design engraved ; stand in Nashiji lacquer ; from Sho Go temple, Kioto.

Height, 8½ inches.

246. BRONZE HIBACHI.

Various designs ; inlaid with silver ; four-cornered form ; two handles ; date, about 1820.

Height, 7½ inches.

247. JAPANESE TEA JAR.

Cylindrical shape ; mottled ; date, about 1750.

Height, 9¼ inches.

248. IRON KETTLE.

For Cha-no-Yu ; chased design of pine and plum ; bronze cover ; handles of dog-foo ; by Kan Chi ; date, about 1800. Height, 8½ inches.

249. PEWTER FLOWER VASE.

Called "Usubata" ; used for flower arrangement ; tripod supporters ; date, about 1830.

(See illustration.)

Height, 9 inches.

250. JAPANESE PEWTER TEA JAR.

Plain mottled surface ; date, about 1650.

Height, 11½ inches.

251. CHINESE PEWTER KORO.

In form of a peach ; cover with ornament of stag ; engraved design of butterfly and leaf tendrils on the peach ; date, about 1800.

Height, 11½ inches.

252. BRONZE WATER JAR.

Inlaid decoration of dragon in medallion ; with cover.

Height, 8 inches.

253. TWO-FOLD SCREEN.

Gold leaf ground ; subject, Chinese lady and two children walking about a garden, with pine, cherry and camelia japonica ; Kano school ; date, about 1600.

Height, 67 inches.

254. TWO-FOLD SCREEN.

Subject, a lady looking at Asahina, the famous warrior ; date, about 1800.

Height, 66 inches.

255. TWO-FOLD SCREEN.

Painted design of autumnal flower on gold ; date, about 1700.

Height, 62½ inches.

256. SMALL SIX-FOLD SCREEN.

Subject, floral decoration on gold background ; date, about 1750.

Height, 54 inches.

257. SMALL SCREEN (SIX FOLDS).

Floral design on gold background ; date, about
1750. Height, 52½ inches.

258. SIX-FOLD SCREEN.

Subject, playing of Chinese harp in a garden ;
silver background ; date, about 1600.

Height, 66 inches.

259. SIX-FOLD SCREEN.

Subject, harp game and painting ; date, about
1600.

260. SIX-FOLD SCREEN.

Painted decoration of Tamagawa, on the banks
of which morning glory and yama buki flourish ;
Kano school ; date, about 1650.

Height, 66 inches.

261. HANGING IRON LANTERN.

Hexagonal shape ; pierced design of a crest ;
Nikko style ; date, about 1650.

Height, 12 inches.

262. MILITARY HAT.

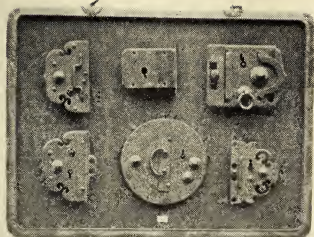
Made of iron ; repousse, "Fudo" ; inlaid
work in gold and silver ; by Nobu Iye Mochin ;
date, about 1750.

263. IRON HIBACHI.

Hammered work of dragon and cloud ; two
handles ; by Mune Iye Mochin.

Height, 9½ inches.

297



384

264. BOX FOR PRIEST'S ROBE.

Two compartments; gilded crests ornate the sides; perforated floral work on the cover; red lacquer finish within.

Dimensions, $10\frac{1}{2}$ x 14 x $12\frac{1}{2}$ inches.

265. STIRRUP AND BRIDLE-BIT.

From Korea; flower inlaid in silver; date, about 1600.

266. IRON LOBSTER.

Articulated; marked "Made by Mune Katsu Miochin of Himeji"; date, about 1550.

Note. Mune Katsu is the Miochin 9th.

267. IRON SAKE BOTTLE.

Inlaid decoration throughout; date, about 1700.

268. METAL WORK.

Repousse work of tiger and bamboo; date, about 1600.

Height, $18\frac{1}{2}$ inches.

269. CHINESE BRONZE CANDLE STICK.

Stork with lotus leaf; stand has carved design of lotus in water; Ming period.

Height, 16 inches.

270. BRONZE CANDLE STICK.

Design, a fish net.

Height, 21 inches.

271. BRONZE CANDLE STICK.

Mate to above.

272. TEMPLE CHAIR.

Red lacquer ; carved design of conventional vine ; from Peking, China ; Ming period.

Height, 43 inches.

273. OLD JAPANESE CLOCK.

Brass movement ; poppy decoration in Zonsei lacquer ; date, about 1720. Height, 36 inches.

274A. BRASS RINTO.

Engraved peony design ; from East Hongwanji temple ; decorated with yoraku on upper part.

Height, 44 inches.

274B. MATE TO ABOVE.

275. JAPANESE CLOCK.

Brass movement ; carved decoration, "Fuyo" ; with stand ; date, about 1780.

Height, 18½ inches.

276. LACQUERED PANEL.

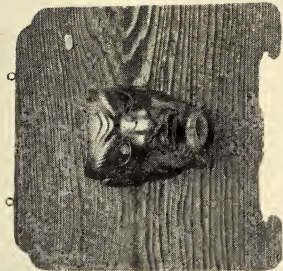
Pink and white peonies and two storks in Mitsuda lacquer ; frame of Wakasa lacquer.

Width, 23½ inches ; height, 56 inches.

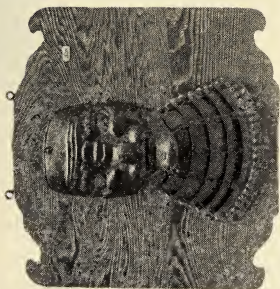
277. JAPANESE CLOCK.

Brass movement ; peony engraving ; crest decoration in lacquer ; date, about 1750.

Height, 30 inches.



324



328

278. WOODEN PANEL.

Carved work of ho-o and cloud ; costly pigment ; gilded frame ; after temple Zojoji style.

Width, $18\frac{1}{2}$ inches ; height, 30 inches.

279. ONE-PANEL SCREEN.

Subject, a princess about to ride in a car ; old Tosa school ; date, about 1550.

Width, 36 inches ; height, 61 inches.

280. FOUR-FOLD SCREEN.

Carved design of sparrow, bamboo and flowers.

Height, 47 inches.

281. OLD JAPANESE CLOCK.

Brass movement ; carved poppy design ; mulberry case and stand ; finished in lacquer ; date, about 1800.

Height, $28\frac{1}{2}$ inches.

282. TEMPLE CHAIR.

Carved and lacquered work of conventional vine ; brocade cushion ; for a high priest of Zen sect ; date, about 1750.

283. BRONZE CLOISONNE VASE.

In form of two standing carp fishes.

Height, 12 inches.

284. LARGE BRONZE WATER JAR.

Chased design of peony and tendrils ; with cover.

285. BRONZE CLOISONNE VASE.

Four-cornered shape ; ho-o and dragon design ; the upper and lower part in brocade decoration in cloisonne ; with stand.

Height, 12 inches.

286. BRONZE CLOISONNE PLATE.

Ho-o design in centre ; karakusa band on edge ; marked "Gei Sei do" on reverse side.

Diameter, 8 inches.

287. OLD CLOISONNE VASE.

Lotus tendril on dark green ground ; fruit design on reverse side.

Height, 14 inches.

288. MILITARY HAT.

Crest of Inba Daizen ; mother of pearl work ; worn at parade ; date, about 1800.

289. IRON HELMET.

Front ornament finished in gold ; extension of leather with dog-foo decoration ; date, about 1700.

290. IRON CUIRASS.

Repousse of dragon and waves ; by Mune Tora Miochin ; date, about 1550.

291. IRON HELMET.

A poem, composed by Prince Konoye, written in red lacquer ; date, about 1500.



302

292. IRON HELMET.

After Chinese cap ; ornamentation of carved and gilded ho-o bird ; date, about 1700.

293. IRON PANEL.

Repousse of dragon in medallion ; inlaid with silver ; date, about 1750.

Height, 12 inches ; width, 16 inches.

294. IRON HELMET.

Ornament of gilded Tokko ; date, about 1600.

295. IRON STIRRUP.

Inlaid design of peony in silver ; date, about 1770.

296. FOUR-FOLD SCREEN.

Chinese carving ; subject, flowers and insects on the upper panel, Chinese hermits in a garden in the centre, writing utensils on the next, wild animals and dragons on the lower panel.

Height, 60½ inches.

297. IRON LOCKS.

Six in number ; various designs ; date, about 1600. (See illustration.)

298. STANDING STATUETTE OF AMIDA.

Gilded ; date, about 1650.

299. WOODEN GONG.

Carved design of a peony; from Buddhistic temple; date, about 1750.

Height, 18 inches; width, 12 inches.

300. CHINESE PANEL.

Carving of a dragon; Ming period.

Height, 18 inches; width, 21 inches.

301. PAIR WOOD CARVINGS.

Dragon; from a temple gate; date, about 1600.

Height, 22 inches.

302. STATUETTE OF MONJU BOSATSU.

Carving of flowers and dog-foo on the stand; gilded; date, about 1600. (See illustration.)

Height, 40 inches.

303. STATUETTE OF MIROKU BOSATSU.

Carved of cedar; attributed to Ten-pei era.

Height, 28 inches.

304. STANDING STATUETTE.

Kwannon; gilded design of dog-foo and dragon in medallion; halo of pierced design; date, about 1600.

Height, 49 inches.

305. IRON HELMET.

Carved dragon as an ornament upon the lacquered surface.

Height, 12 inches.



306. GILDED METAL SHARITO.

Carved design of peony tendrils throughout ; marked "The donor, Doshin, village Mochio. Temple Koki, Mt. Kamishita, County Ishikawa, of Kawachi. Lucky day of Sept., 7th year of Yen-Ho " ; with stand.

307. STATUETTE OF AMIDA.

Carved and gilded ; date, about 1800.

Height, 20 inches.

308. CHINESE CLOCK.

Brass movement ; ornated with shippo ; the face divided into twelve parts ; stand decorated with two coiled dragons carved of wood ; brought to Japan by priest Takucho ; marked "Tada Mune Magohachi Kimura, the mechanic for the Dai Honzan, Kioto " ; date, about 1750. (See illustration.)

Height, 27 inches.

309. HAND BELL.

Carved subject, angel and devils ; tokko on the top ; from temple Kongobo, Koyasan ; date, about 1600.

310. CARVED STATUETTE OF JIZOSON.

Decorated with pigments and yoraku ; with lotus stand.

Height, 42 inches.

311. WOOD STATUETTE OF MIROKU.

Of old hinoki wood ; attributed to Ten-pei era.

Height, 18 inches.

312. SMALL SHRINE.

Decoration, carved nine-headed dragon with a treasure in pigment; the stand is of carved karakusa and gilded; outside finish, mirror black lacquer. Height, 25 inches.

313. WOOD CARVING.

Hinoki wood; dragon and cloud carved and finished in pigment; date, about 1700. Height, 14 inches; width, 28 inches.

314. JAPANESE CLOISONNE PITCHER.

Design, dog-foo and peony; gourd shape; with cover. Height, 9 inches.

315. JAPANESE CLOISONNE VASE.

Cylindrical form, with design of cherry and long tail bird, carp fish and water fall. Height, 12 inches.

316. CHINESE STATUETTE OF BUDDHA.

Gilded face; the body ornated with cloisonne; stand also gilded; Kang-hsi period.

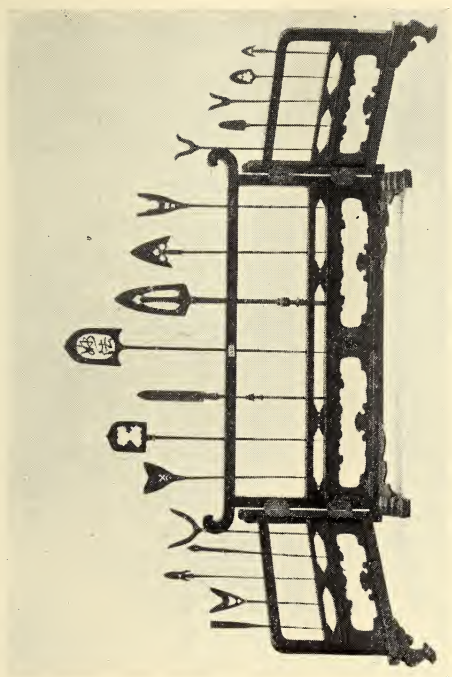
317. SIMILAR TO ABOVE.

318. SIMILAR TO ABOVE.

319. SIMILAR TO ABOVE.

320. JAPANESE CLOISONNE BOWL.

Design, flower, peacocks and characters. Diameter, 14 inches.



321. OLD BRONZE ELEPHANT.

For crystal ball stand ; shippo of ho-o pattern ; shippo ornament and gilded. Height, 12 inches.

322. IRON HELMET.

Toppai style ; unique shape named by Miochin ; various designs with silver ; date, about 1500. (See illustration.)

323. IRON HELMET.

Worn by Yeizan priests ; dragon inlaid with gold and silver ; date, about 1600. (See illustration.)

324. IRON VISOR.

Hammered work ; by Yoshiiye ; date, about 1650. (See illustration.)

325. FIRE-ARM.

Chased design of dog-foo and peony ; the crest of Lord Hikone.

326. FIRE-ARM.

Dragon and dog-foo inlaid ; karakusa in lacquer and mother of pearl.

327. FIRE-ARM.

Inlaid work of pine, bamboo, stork and turtle ; crest, plum blossom in brass.

328. IRON VISOR.

Repousse of okina style ; by Nobuiye Miochin.
(See illustration.)

329. ARMOR.

Cuirass of iron decorated with writing in lacquer ; iron visor ; helmet of kuwagata and of pierced chrysanthemum design. (See illustration.)

330. ARROW HEADS (SEVENTEEN IN NUMBER).

Showing representative works from Kamakura era to Tokugawa ; stand in form of three-fold screen. (See illustration.)

330A. ARROW HEADS (TWENTY-SEVEN IN ALL).

330B. ARROW HEADS (TWENTY-TWO IN SET).

331A. GILDED RINTO OR LAMP.

Lotus decoration with yoraku ; from temple Hongwanji.

331B. MATE TO ABOVE.

332. BRASS RINTO.

Carved chrysanthemum with yoraku ; crest of wisteria ; marked "3rd year of Bunka" and "I adore thee, O eternal Buddha."

Height, 95 inches.



334

333. TWO-PANEL SCREEN.

Carved design of lotus and stork in fan-shaped reserve ; carved iris on lower part ; in costly pigment ; frame finished in black and vermillion lacquers. Height, 76 inches.

334. TEMPLE CHAIR.

Negoro lacquer ; lotus decoration ; lacquer and mother of pearl work of chrysanthemum tendrils ; engraved ho-o on metal fastenings. (See illustration.)

335. JAPANESE CLOCK.

Dragon in lacquer ; brass movement, with engraved tendril design ; marked "Riyemon Onuma, clock maker" ; with stand. (See illustration.) Height, 40 inches.

336. LACQUERED LONG CHEST.

Lotus in Zonsei lacquer ; a crest in centre ; metal fastenings. Dimensions, 21 x 39 x 26 inches.

337. JAPANESE CLOCK.

Brass movement, with engraved karakusa ; stand of mulberry wood ; lacquer decoration of wisteria ; outer case ornated in lacquer with design of ho-o and wisteria ; marked "Gensuke Hamatani, clock maker for Prince Owari." (See illustration.) Height, 29 inches.

338. PAINTED DOOR.

Of Satsuma cedar ; pine, falcon and crest kiri
in lacquer. Width, 27 in. ; height, 65 in.

339. TEMPLE CHAIR.

Carved design, peony and peacock ; finished
in lacquer and ornated with metal fastenings.

340. FOUR-FOLD SCREEN.

Camelia japonica painted on gold leaf back-
ground ; Kano school ; carved floral decoration
on lower part ; reverse side of silk with ho-o
medallions.



475 235 510 233 476

Third Day's Sale.

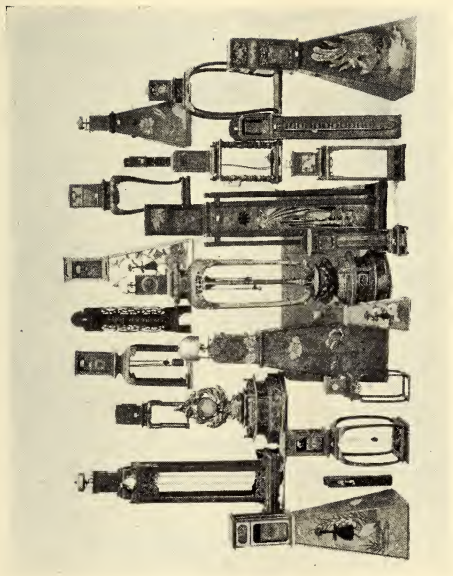
Saturday, November 19, 1904, at 2.30.

Collection of Mayedate.

(*Ornaments for Helmet.*)

341. WOOD CARVING.
Dog-foo ; finished in gold.
342. CARVED DRAGON.
Called flying dragon.
343. BRONZE ORNAMENT.
Cloud and two dragons.
344. WOOD CARVING.
Gilded ; in form of shachi fish.
345. GILDED METAL ORNAMENT.
Tokko and cloud.
346. GILDED METAL ORNAMENT.
Round ; perforated characters ; " Num Mio
Ho Ren Ge Kio."
347. WOOD CARVING.
Flying dragon lacquered.
348. METAL ORNAMENT.
A chrysanthemum finished in gold and silver.

349. WOOD CARVING.
Devil's face ; teeth of silver ; Negoro lacquer.
350. WOOD CARVING.
A dragon gilded.
351. WOOD CARVING.
Head of dog-foo ; Negoro lacquer and gilded.
352. IRON MAYEDATE.
Devil's face ; marked " By Toshi Kage."
353. BRONZE ORNAMENT.
Running dog-foo on a rock plated with gold
and silver.
354. WOOD CARVING.
Mask of devil in red lacquer ; gilded teeth and
eyes.
355. METAL ORNAMENT.
Pair of pigeons and crescent ; finished in gold
and silver.
356. METAL WORK.
Ku wagata ; rising sun and cloud.
357. IRON MAYEDATE.
Mask of devil ; chased design of chrysanthemum
and Chinese lily ; marked " By Mune Chika
Miochin."



358. WOOD CARVING.

Dog-foo.

359. GILDED METAL WORK.

Kuwagata ; coiled dragon.

Collection of Bronze Yatate.

(Portable Inkstand.)

360. BRONZE YATATE.

Chased work of dragon and cloud ; the cover in form of mushroom ; marked "Gessai."

361. BRONZE YATATE.

Melon and vine ; crest of kiri on reverse side.

362. BRONZE YATATE.

In form of bamboo ; chased design of the same ; marked "By Riu Bun Do."

363. BRONZE YATATE.

Four-cornered shape ; engraved work of karakusa ; crest on the cover.

364. BRONZE YATATE.

Bird and waves ; the cover with chased work of a rock.

365. BRONZE YATATE.

Characters for Zodiac ; in form of a drum ; with a knife.

366. BRONZE YATATE.

Perforated design on the brush holder ; bamboo on the inkstand ; marked "Kang-hsi" on the bottom.

367. BRONZE YATATE.

Dragon throughout.

368. BRONZE YATATE.

Inkstand in form of a bag ; carved dog-foo on the cover.

369. BRONZE YATATE.

Inkstand after a turtle ; chased plum blossoms on the brush holder.

370. BRONZE YATATE.

Perforated and inlaid.

371. BRONZE YATATE.

Chased dragon on the brush holder and ho-o on the inkstand.

372. BRONZE YATATE.

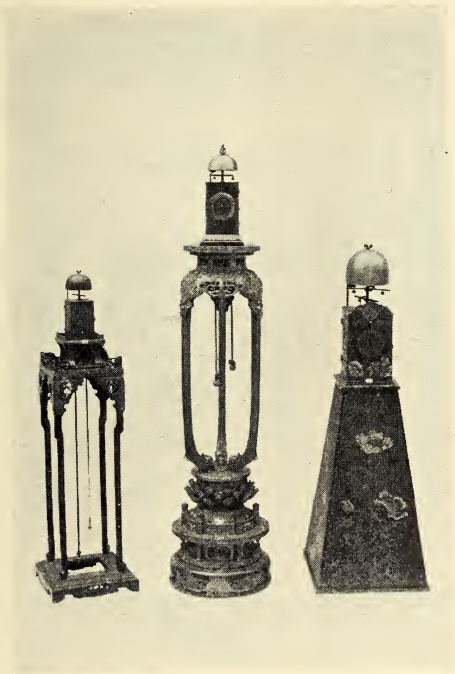
Dragon design.

373. BRONZE YATATE.

Design of autumnal flowers ; butterfly on the cover.

374. BRONZE YATATE.

Pierced work with characters ; marked "Ta Cheng Nen Chik" on the bottom.



335

505

435

375. BRONZE YATATE.

Karakusa engraved ; dog-foo as knob.

376. BRONZE YATATE.

The inkstand in shape of persimmon ; the brush holder decorated with engraved conventional vine.

377. BRONZE YATATE.

Inlaid dragon on the brush holder ; chased work of the same on the inkstand.

378. SENTOKU YATATE.

The inkstand has mushroom chased ; bamboo on the brush holder.

379. IRON LOCK.

Marked "By Mune Hiro, the locksmith, presented to Hachiman gu, temple Yakushi. August the 4th year of Oyei."

380. IRON LOCK.

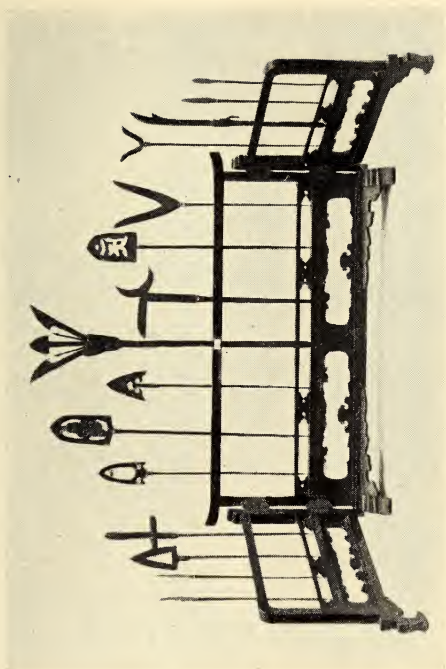
Old style,

381. THREE IRON LOCKS.

One of them has engraved mark "Kasuga Midzutani sha, the 2nd year of Gentoku."

382. FIVE IRON LOCKS.

383. IRON DOOR FOR SAFE.
Used in Genroku period.
384. SEVEN IRON LOCKS.
Various shapes. (See illustration.)
385. HANGING IRON LANTERN.
Hexagonal; decoration, chased storks in medallion. Height, 23 inches.
386. JAPANESE PEWTER TEA JAR.
Four handles; mottled; marked "By Idzumo Ten Ka ichi"; date, about 1750.
387. JAPANESE PEWTER TEA JAR.
Marked "Kinyemon On suzuya"; date, about 1650.
388. JAPANESE PEWTER TEA JAR.
Marked "Kinyemon Suzuya." (See illustration.)
389. CHINESE PEWTER TRAY.
Inlaid work of fancy design.
390. CHINESE PEWTER TRAY.
Inlaid design of pink; marked "Chien-Lung nen chix."
391. LARGE JAPANESE TEA JAR.
Marked "Ten Ka ichi On suzuya"; rare. (See illustration.) Height, 16 inches.



392. CHINESE PEWTER TRAY.

Octagonal ; inlaid design of pine and bamboo ; marked "Kokkio Ta Zo" ; Ming period.

393. IRON TEA KETTLE.

Chased design of stork and cloud ; the cover in shape of Fuji Yama ; date, about 1800. (See illustration.)

394. CHINESE PEWTER PITCHER.

Tripod supporter ; handle and spout of jade ; the knob also of red jade ; marked "Kifuku Sho sei" ; Ming period.

395. CHINESE PEWTER PITCHER.

Hexagonal ; engraved design, characters and incense burners ; the design of ho-o on the cover ; marked "Zen mon gai Bai shi gai yei mei sei." Height, 6 inches.

396. IRON BOWL.

In form of a shell ; handle in imitation of lobster ; date, about 1700.

397. JAPANESE PEWTER TEA JAR.

Mottled ; marked "Chiu yemon Suzuya" ; date, about 1750. Height, 10½ inches.

398. IRON SAKE VESSEL.

Characters in ornamentation ; silver cover ; with handle. (See illustration.)

399. JAPANESE CLOISONNE VASE.

Gourd shape ; dog-foo and cloud as decoration ; karakusa on the bottom.

Height, 8½ inches.

400. BRONZE CLOISONNE KORO.

Elephant with a child on its back.

Height, 10 inches.

401. GLAIVE.

For ladies ; handle decorated with mother of pearl.

Length, 102 inches.

402. NAGINATA.

Length, 91 inches.

403. GLAIVE.

Black lacquer ; crest of three fans ; sheath decorated with karakusa in lacquer ; marked "By Mune Hide Hara of Himeji, 5th month, 3rd year of Bunsei."

404. SPEAR.

Ohmi ; sheath in dark red lacquer.

Length, 123 inches.

405. GLAIVE.

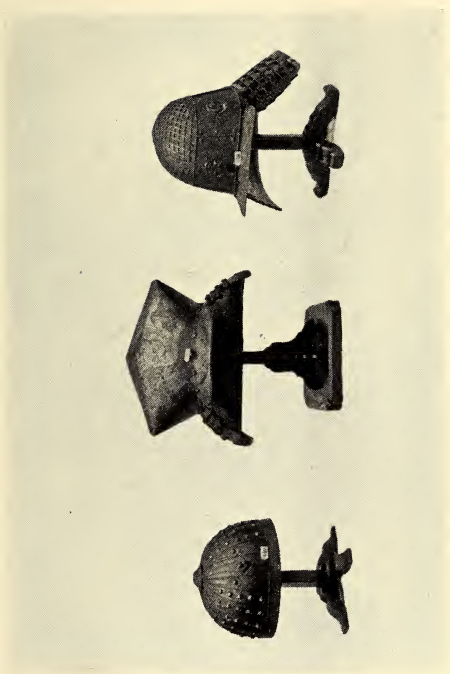
Handle with mother of pearl and silver fastenings ; with sheath ; marked "Kane Michi Fujiwara Igano²Kami Kaji Sosho Nippon."

Length, 106 inches.

406. SPEAR.

Ornated with silver.

Length, 126 inches.



442

323

322

407. GLAIVE.

Crest of Manji in lacquer ; Yamashiro no
Kami ; gilded metal ornamentation.

Length, 108 inches.

408. NAGA MAKI.

Handle ornated with mother of pearl ; gilded
sheath in lacquer.

Length, 81 inches.

409. CONCH SHELL.

Used in army.

410. SWORD CASE.

Crest of Tomoye ; decoration of karakusa in
lacquer and mother of pearl ; with a lock.

Length, 43 inches.

411. CASE FOR FIRE-ARM.

Crest of Prince Shimadzu ; lacquer and mother
of pearl decoration ; with a lock.

Length, 59 inches.

412. TWO SPEARS.

Mother of pearl finish ; called "Gin-Cho."

Length, 43 inches.

413. COLLECTION OF ARROW HEADS.

Fifteen specimens ; in a frame. (See illus-
tration.)

414. CHINESE METAL WORKS FOR SADDLE
(TWO IN NUMBER).

Perforated design of waves and dragon ; with
malachite ; Chien-Lung period.

415. TWO-FOLD SCREEN.

Subject, Musashino ; Kano school ; carving of peony on the lower part ; date, about 1600.

Height, 73 inches.

416. TWO-FOLD SCREEN.

Subject, *Nandina domestica* in snow ; silver background ; date, about 1650.

Height, 64 inches.

417. SIX-FOLD SCREEN.

Subject, Chinese ladies in a garden ; date, about 1550.

Height, 60½ inches.

418. SIX-FOLD SCREEN.

Gold leaf background ; subject, willow tree and storks ; date, about 1600.

Height, 60 inches.

419. OLD SIX-FOLD SCREEN.

Subject, poppies and young bamboo ; date, about 1600.

Height, 67½ inches.

420. COMPANION TO ABOVE.

421. OLD JAPANESE CLOCK.

Brass movement ; pine needles in lacquer on the case ; mulberry stand carved and lacquered. (See illustration.)

Height, 28½ inches.

422. JAPANESE KOTO.

Thirteen stringed harp ; kiri wood ; decoration, wisteria in lacquer and mother of pearl ; date, about 1800.

Length, 76 inches.



437

431

444

423. JAPANESE CLOCK.

Engraved design of cherry and karakusa on brass movement ; gilded stand.

Height, 31½ inches.

424. BIWA — MUSICAL INSTRUMENT.

Of cherry and kiri wood ; Buddhistic angel in lacquer ; chrysanthemum painted on skin ; stand in Zonzei lacquer. (See illustration.)

Height, 32½ inches.

425. JAPANESE CLOCK.

Brass movement ; design of poppies and vine ; with stand.

Height, 50 inches.

426. JAPANESE KOTO.

Of kiri wood ; decoration, Yatsubishi in lacquer and mother of pearl. (See illustration.)

Length, 75 inches.

427. OLD JAPANESE CLOCK.

Karakusa engraved on the brass movement ; Tokugawa crest on the stand. (See illustration.)

Height, 21¼ inches.

428. TWO-FOLD SCREEN.

Subject, lily and bamboo ; painted on Satsuma cedar. Height, 71 inches ; width, 28½ inches.

429. LACQUER CHEST.

Peony design on costly Nashiji lacquer ; crest of peony in gold lacquer ; used at Honwanji temple. Dimensions, 15 x 22½ x 14 inches.

430. FOUR-FOLD SCREEN.

Poppies and peony tendrils ; carved and in pigment. Height, 70½ inches.

431. HELMET.

Yeboshi shape ; front ornament, forked dagger ; sun and moon painted on sides in lacquer ; ornated with silver. date, about 1750. (See illustration.)

432. IRON WAIDATE.

Perforated cherry design ; with hauberk.

433. IRON VISOR.

Lacquered throughout ; date, about 1700.

434. IRON HELMET.

Dragon and cloud in repousse work ; maye-date of iron dog-foo ; date, about 1550.

435. JAPANESE CLOCK.

Movement of brass, iron and bronze ; design of chrysanthemum ; marked "Naga Nori Musashi no Kami Kakezo Hirayama, Miyuki cho of Kioto." (See illustration.)

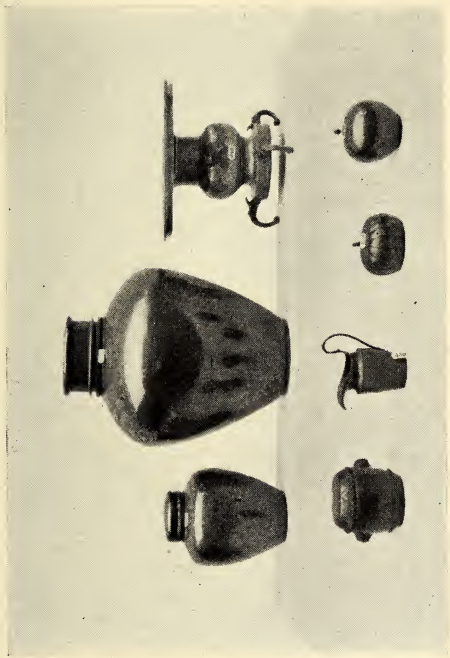
436. IRON STIRRUP.

Inlaid decoration of cherry and raft in water ; date, about 1600.

388

391

249



463

459

458

460

437. LEATHER HELMET.

Worn by a priest; lacquer decoration of dragon fly — victory; marked "Made by Tada Nao Terada"; unique shape; date, about 1700. (See illustration.)

438. IRON MILITARY HAT.

Dragon, ho-o and dog-foo inlaid with silver.

439. IRON HELMET.

Engraved names of Shinto deities; by Mune Hisa Miochin; date, about 1550.

440. IRON HAT.

Hammered work; Nanban style; date, about 1600.

441. IRON VISOR.

In imitation of leather; date, about 1600.

442. IRON HELMET.

Hammered work; date, about 1650. (See illustration.)

443. IRON VISOR.

With neck protector of iron; date, about 1550.

444. IRON HELMET.

Inlaid decoration; leaf tendrils; date, about 1600. (See illustration.)

445. IRON GREAVES.
Dragon in lacquer ; finished with brocade and leather.
446. IRON HELMET.
Zunari style ; date, about 1550.
447. PAIR IRON MITTENS.
Called " Oda style " ; work of the hauberk.
448. STATUETTE BUDDHA.
Seated on lotus stand ; date, about 1600.
449. BRONZE ELEPHANT.
Decked with jewels ; design of ho-o and clouds. Height, $11\frac{1}{2}$ inches.
450. CLOISONNE PLACQUE.
Decoration, peony, cherry and dog foo in five colors ; petals of cherry on reverse side.
Diameter, 15 inches.
451. PEWTER FLOWER VASE.
Bottle shape ; date, about 1650.
Height, 17 inches.
452. BRONZE KORO.
In form of peacock ; ornated with enamel and jewels. Height, 11 inches.
453. JAPANESE CLOISONNE BOWL.
Peony design throughout.
Height, 7 inches ; diameter, 14 inches.



477

454. CLOISONNE VASE.

Chrysanthemum design. Height, 18 inches.

455. CHINESE CLOISONNE KORO.

Tripod supporter ; dragon handle ; lotus tendrils ; Chien Lung period. Diameter, 6 inches.

456. LARGE CLOISONNE PLACQUE.

Lotus karakusa throughout. Diameter, 21 in.

457. JAPANESE PEWTER TEA JAR.

Mottled as Nashiji ; date, about 1600.

Height, 12 inches.

458. CHINESE PEWTER TEA CADDY.

Melon shape ; iron rust surface ; rare ; date, about Ming period. (See illustration.)

Height, 3 inches.

459. PEWTER PITCHER.

Chinese ; surface showing bronze texture ; very rare ; date, about Yuan period. (See illustration.)

460. JAPANESE PEWTER TEA JAR.

Round ; mottled surface. (See illustration.)

Height, 4½ inches.

461. CHINESE PEWTER TEA CADDY.

Drum shape ; date, about 1600.

Height, 3 inches.

462. JAPANESE PEWTER TEA JAR.

Four handles ; mottled as snowing ; marked "Yoshi Nari Tenka Ichi, pewter artist" ; date, about 1750. Height, 10 inches.

463. OLD CHINESE PEWTER TEA CADDY.

Drum shape ; double covers ; dog-foo handles ; movable eyeballs ; marked "Chin Son Shu" ; date, about 1650. (See illustration.) Height, $4\frac{1}{2}$ inches.

464. JAPANESE PEWTER TEA JAR.

Flattened shape ; date, about 1750.

465. JAPANESE PEWTER TEA JAR.

Cylindrical form, with double covers ; marked "Made by Goto".

466. JAPANESE PEWTER BOWL.

Engraved lotus in centre ; band of leaf tendrils on edge.

467. IRON KORO.

Drum shape ; engraved design of a gourd ; crest of Tomoye in silver. Height, 4 inches.

468. IRON ORNAMENT.

In form of winged dragon ; partly articulated ; by Nobu Yuki Miochin ; date, about 1700.

469. IRON HELMET.

Kuwagata ; crest of Asano family ; date, about 1700. (See illustration.)



483

480

469

470. IRON HELMET.

An official hat shape ; date, about 1600.

471. LACQUERED CHEST.

Crest, storks in medallion form ; Nashiji, with metal fastenings. Dimensions, 16 x 25 x 15 in.

472. COMPANION TO ABOVE.

473. JAPANESE CLOCK.

Strong brass movement ; lacquered decoration of peony and karakusa, with perforated metal ornaments ; from the mansion of Prince Kishu ; marked "Made by Mune Nori Kanyemon Yamamoto, the clock maker to his excellency Prince Kishu." (See illustration.)

474. METAL CANDLE STICK.

Flowers of colored bronze ornated with enamel ; nine candle holders ; formerly in a Buddhistic temple ; with stand. Height, 32½ in.

475. MATE TO ABOVE.

476. JAPANESE CLOCK.

Brass ornament with engraved decoration of plum ; marked "Yoshu" ; painting of stork and reed on the stand. (See illustration.)

477. TEMPLE CHAIR.

Negoro lacquer ; carving of peony and ho-o ; metal fastenings. (See illustration.)

478. OLD JAPANESE CLOCK.

Brass movement; perforated Shippo design; conventional chrysanthemums in lacquer and mother of pearl. (See illustration.)

479. SADDLE.

Called "Ko nida"; mother of pearl decoration; brass fastenings; gift to Prince Hikone from Daimio Asano; date, about 1750.

480. IRON HELMET.

Of Nanban Tetsu; Mongolian style; date, about 1600. (See illustration.)

481. BRONZE GONG.

Chased decoration, "angels and buddhistic hymn"; karakusa design on the lower part; mark, "written by Priest Tanko the 36th, March 18, Tatsu 9th year of Kio Ho"; made by Mune Haru Sakon Nishimura, of Daibutsu, Kioto.

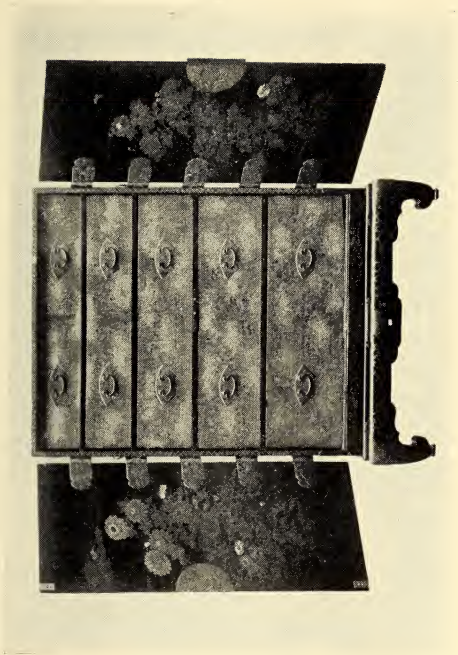
482A. BRASS RINTO.

Gilded canopy with double Yoraku; engraved decoration, ho-o and wistaria. Length, 77 in.

482B. MATE TO ABOVE.

483. IRON HELMET.

Pierced cherry crest; stag's horn on the sides; date, about 1700. (See illustration.)



496

484. PAIR OF SLEEVES.

Bishamon style ; perforated plum and crest Tomoye ; sleeves of the hauberk.

485. ARMOR.

Helmet of Sensuji ; crest decoration on the cuirass ; complete with sleeves and greaves ; date, about 1700.

486A. RINTO.

With small canopy and Yoraku ornated with enamel ; rare. Length, 55 inches.

486B. COMPANION TO ABOVE.

487. OLD JAPANESE CLOCK.

Brass movement, having engraved leaf tendrils ; case of kiri wood ; stand decorated in lacquer and mother of pearl ; marked "Made by Shin Sugiyama". Height, 40 inches.

488. IRON CUIRASS.

Repousse dragon in water ; ornated metal fastenings ; by Mune Kuni Miochin ; date, about 1650.

489. LACQUERED CABINET.

Elaborate design of ho-o in metal as a lock ; six drawers ; flowers painted in lacquer ; stork and reed on the reverse side of the doors ; metal works. Dimensions, 18 x 36 5/2 inches.

490. JAPANESE CLOCK.

Engraved flower on the brass movement ; crest and conventional vine in lacquer over teak case ; lacquered stand. Height, 26 inches.

491. GONG.

Supported by a stand formed of lotus leaf and dragon.

492. JAPANESE CLOCK.

Brass movement ; case decorated in lacquer ; stand also in lacquer of lotus. (See illustration.) Height, 41 inches.

493. LACQUERED CHEST.

Used by Daimio ; Nashiji background with peony tendrils and crest Tomoye, butterfly ; supported by six legs ; with purple silk cord.

Dimensions, 20 x 30 x 16 inches.

494. MATE TO ABOVE.

495. GONG.

Carved stand finished in lacquer.

Height, 39 inches.

496. LACQUERED CABINET.

Tokugawa crest ; ornated metals ; the reverse side of the door, chrysanthemum design in lacquer and mother of pearl ; stand finished in lacquer. (See illustration.)

Dimensions, 31 x 37 x 56 inches.



497

497. FOUR-FOLD SCREEN.

Carving of carnation, pine and storks; brass fastenings; brocade lining. (See illustration.)

Height, 72 inches.

498. PAIR OF FUSUMA.

Subject, five children at play; painted on gold ground by Tanshunsai; date, about 1780.

Width, 36 inches; height, 79 inches.

499. TWO-FOLD YEDO.

Maple and owls on Satsuma cedar; Haritsu school.

Height, 69 inches.

500. TWO WOODEN DOORS.

Satsuma cedar; dog-foo and peony; metal fastenings.

Height, 48½ inches.

501. TEMPLE LANTERN.

Lacquer decoration of dragon and cloud; gilded metal fastenings; handle of mother of pearl; carved falcon on the top; from Sumi Yoshi temple; stand in lacquer.

502. WOOD CARVING.

Dog-foo carved of cedar; formerly at temple Hachiman, Mt. Tamuke; stand finished in lacquer; date, about 1500.

503. MATE TO ABOVE.

504. TEMPLE CHAIR.

Carving of ho-o, peony and chrysanthemum ;
metal ornaments.

505. OLD JAPANESE CLOCK.

Iron movement with inlaid leaf tendril design ;
elaborate stand ; marked "Shige Yuki Takaba-
take". (See illustration.)

506. PAINTED PANEL.

Formerly shrine door ; Nitten painted on gold
background ; date, about 15th century.

Height, $38\frac{1}{2}$ inches ; width, $19\frac{1}{2}$ inches.

507. COMPANION TO ABOVE.

Getten painted.

508. SHRINE.

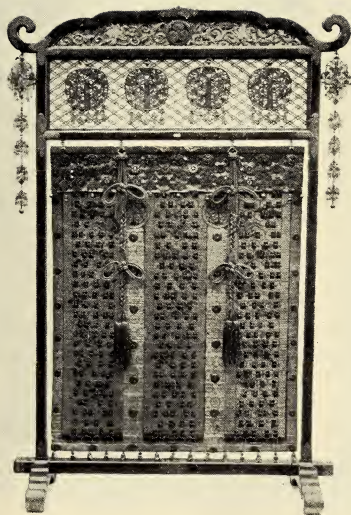
Statuette of Monju ; painting of lotus on the
reverse side of the hinged door ; black lacquer
outside ; metal ornaments ; date, about 1600.

509. TEMPLE CHAIR.

Carving of chrysanthemums in water ; finished
in lacquer.

510. OLD JAPANESE CLOCK.

Brass movement ; ornated with engraved de-
sign of waves and carp in waterfall ; black per-
simmon stand ; marked "Kozaburo Hatakeyama,
the clock maker". (See illustration.)



513

511. TEMPLE CHAIR.

Carving of poppies, rooster and sparrows.

512. CARVED STAND.

Kasuga style ; carving of lotus, mandarin ducks and karakusa ; finished with gold lacquer ; metal ornaments. Dimensions, $24\frac{1}{2}$ x 42 x 30 in.

513. DECORATED MISU.

Carved peony and Tokugawa crest on the upper part followed with four kemans, the lower part Misu having the same crest ; Yoraku decoration ; lining embroidered on both sides, ho-o and cloud ; from Nikko. (See illustration.)

Height, $74\frac{1}{2}$ inches ; width, 51 inches.

514. LARGE JAPANESE CLOCK.

Engraved and inlaid design of lotus and dragon on the brass movement ; the case of perforated shippo with lattice work, decorated on edge with chrysanthemum in mother of pearl ; middle part, carving of dog-foo on three sides ; stand in black lacquer with carving of waves and dragon overlaid on the panel ; carved design of stork and reed and pine and crane on the reverse side of clock's door ; marked "Made by Omi Kimura, the clock maker to Lord Hikone" ; crest of Tachibana in silver on the stand and also "Used in the large parlor of Daimio Ii, January, 12th year of Gen Roku. (See illustration.)

Height, 87 inches.

515. CARVED SCREEN (TWO FOLDS).

Peony and peacock carved and finished with costly pigment ; gilded metal fastenings.

Height, 78 inches.



SMITHSONIAN INSTITUTION LIBRARIES



3 9088 01574 8817